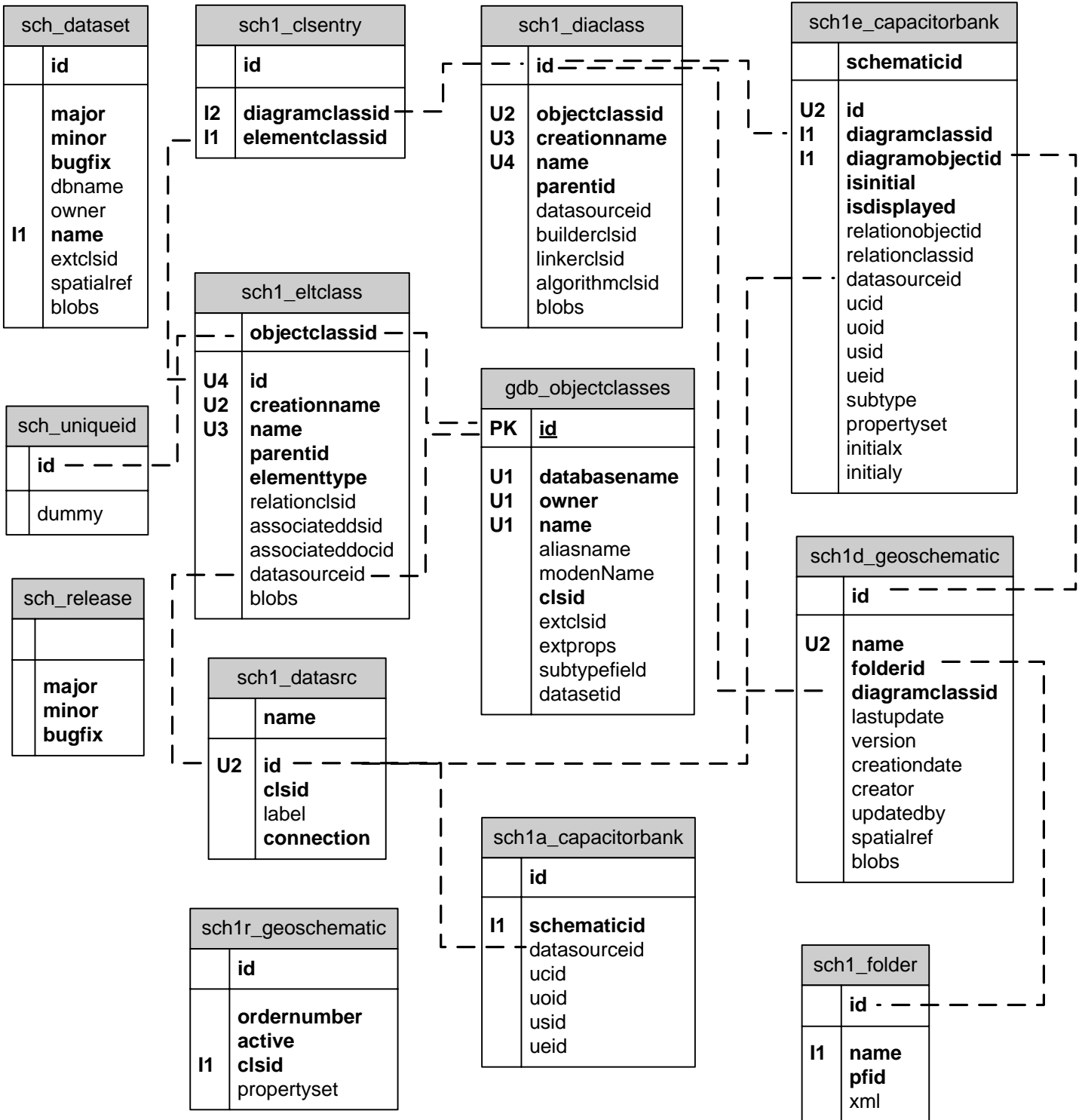


Schematic dataset tables in PostgreSQL



Only one of each sch1a_<element_type_name>, sch1d_<diagram_type_name>, sch1e_<element_type_name>, and sch1r_<diagram_type_name> tables are shown above for the sake of simplicity. Most schematics contain multiple sch1a_<element_type_name> and sch1e_<element_type_name> tables, and can contain more than one sch1d_<diagram_type_name> and sch1r_<diagram_type_name> tables.